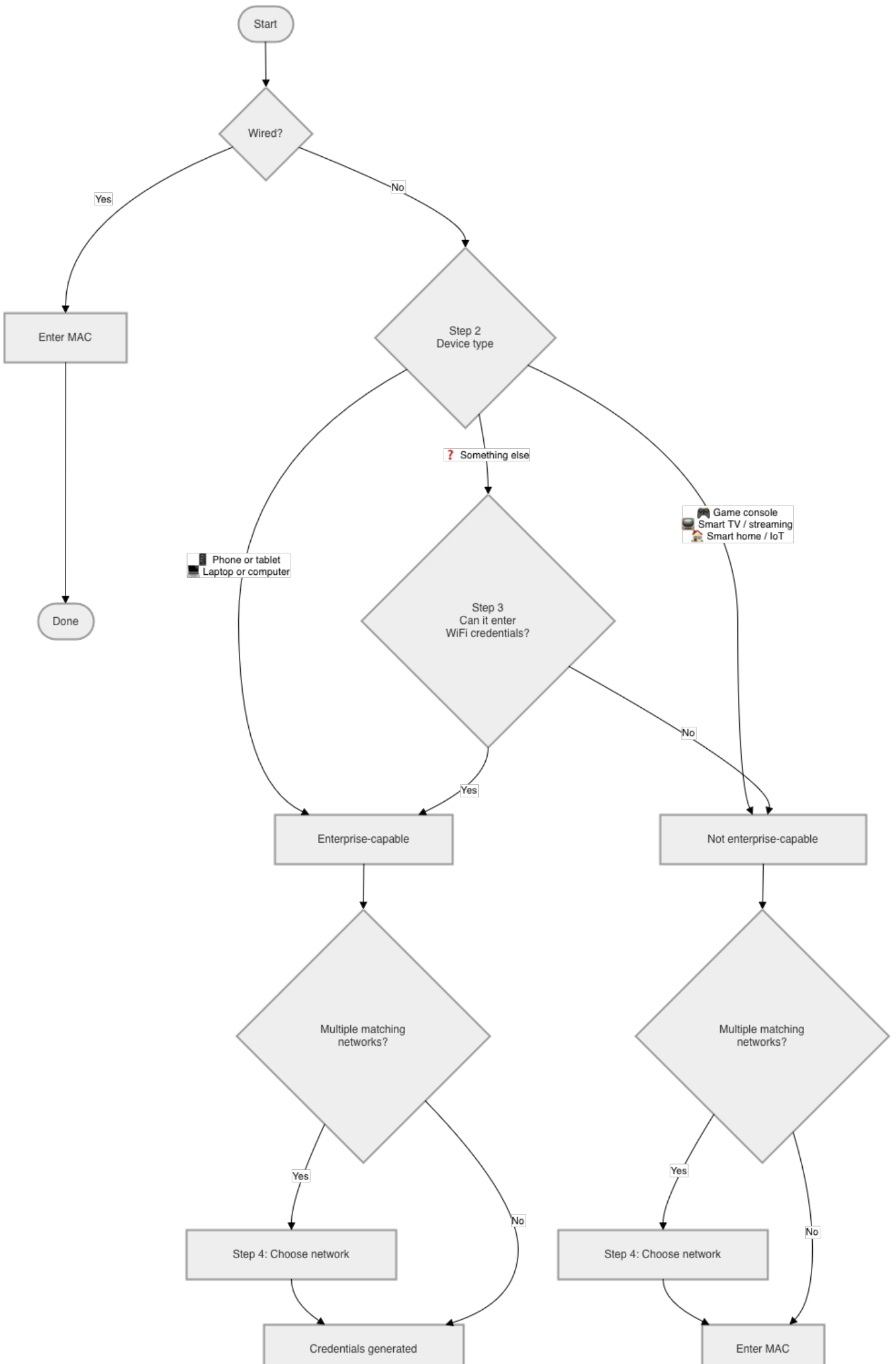


# Network selection tree



This is the selection tree used for the "Help me choose" user-facing device creation UI.

## Step 1: Wired?

- **Yes** → Enter MAC → Done
- **No** → Step 2

## Step 2: Device type

- **Phone or tablet** (iPhone, iPad, Android) → enterprise-capable
- **Laptop or computer** (Mac, Windows, Linux) → enterprise-capable
- **Game console** (PlayStation, Xbox, Nintendo Switch, ...) → not enterprise-capable
- **Smart TV or streaming device** (Roku, Fire Stick, Apple TV, ...) → not enterprise-capable
- **Smart home / IoT** (speakers, bulbs, sensors, ...) → not enterprise-capable
- **Something else** → Step 3

## Step 3: Can it enter a WiFi username and password? *(only for "something else")*

- **Yes** → enterprise-capable
- **No** → not enterprise-capable

## Step 4: Which network? *(only if multiple networks match the capability bucket)*

Present all matching networks by `label` + `icon` for user to select.

## Enterprise-capable outcome

- Credentials generated
- Apple device → prompt: install config profile
- Done

## Not enterprise-capable outcome

- Enter MAC → Done
-

Revision #4

Created 2026-04-08 14:13:38 UTC by Admin

Updated 2026-04-08 14:40:45 UTC by Admin